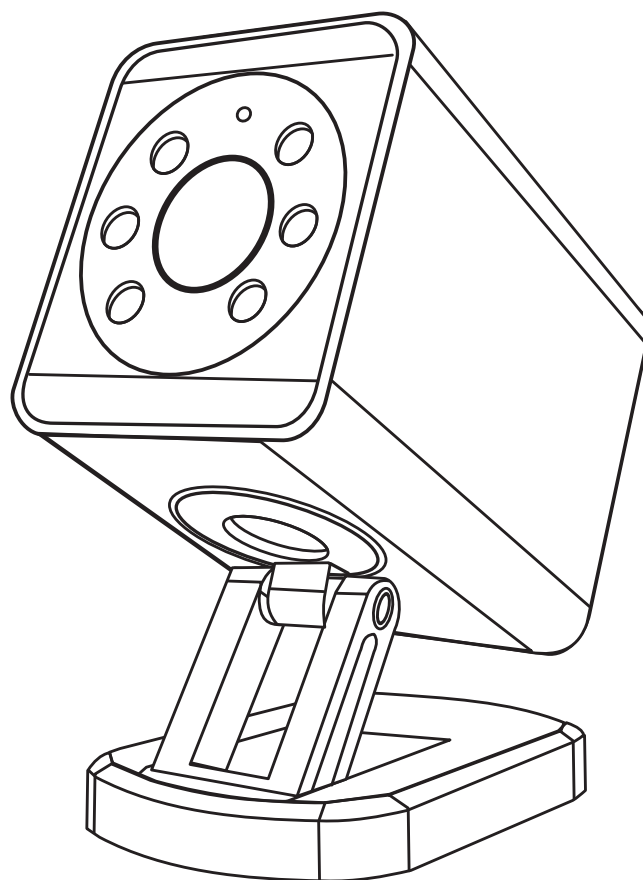


# GROS

## PROGRAMMING, ASSEMBLY AND OPERATION MANUAL OF THE CAMERA



**F-LINX**

**CAUTION!** Copying, reproducing or distributing any part or all of this manual without the prior permission of the copyright owner is strictly prohibited. Any violation may result in legal liability.

## GENERAL INFORMATION

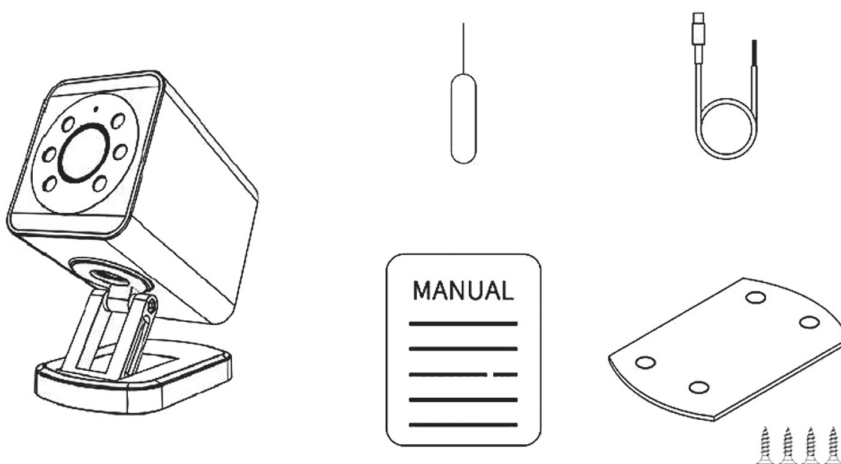
**The F-Linx camera** is an innovative solution that is ideal for GROS motor drive systems. Thanks to its advanced technology, the camera allows monitoring of the space around the building, which increases the level of security and access control. When used in combination with GROS branded motor drives, the F-Linx system allows the automatic closing and opening of the door, as well as remote observation and recording of events in real time.

**The F-Linx camera** can also be used independently from the motor drive, allowing the space to be monitored without having to install a full automation system. This highly comprehensive solution increases user comfort and security, giving full control over what is happening around the area.

## TECHNICAL INFORMATION

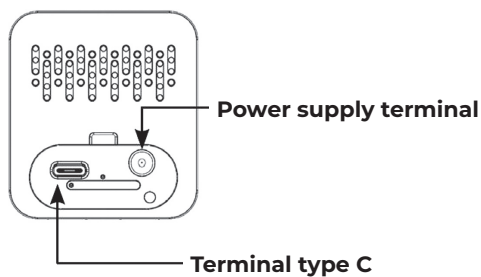
Product name:	<b>F-LINX camera</b>
Maximum resolution:	<b>2304 * 1296</b>
Lens:	<b>HD 2,8 mm @ F2,0</b>
Lens adjustment angle:	<b>horizontal 120°, vertical 105°</b>
Automatic switchover	<b>day/night</b>
NETCOM:	<b>WIFI 802.11 b/g/n 2.4G+5G; 4G LTE (optional)</b>
Storage:	<b>Cloud/SD card</b>
Power supply:	<b>5V DC - 24V DC (±10%)</b>
Speaker:	<b>2W digital speaker</b>
Microphone:	<b>2 * MIC digital noise reduction</b>
Temperature range:	<b>-10 °C - + 60 °C</b>
Protection class:	<b>IP66</b>
Net weight:	<b>210 g</b>

## LIST OF PRODUCTS IN THE BOX

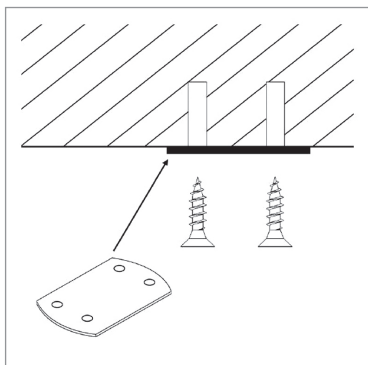


Name of the part	Quantity
Camera F-LINX	1 pcs.
Connection cable between camera and motor drive	1 pcs.
Bottom metal base with screws (4 pcs)	1 set
Reset needle	1 pcs.
QR codes to download the application	1 pcs.

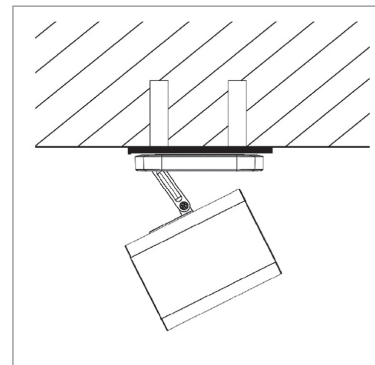
## MECHANICAL ASSEMBLY



Connecting the power supply cable of the camera with the motor drive.



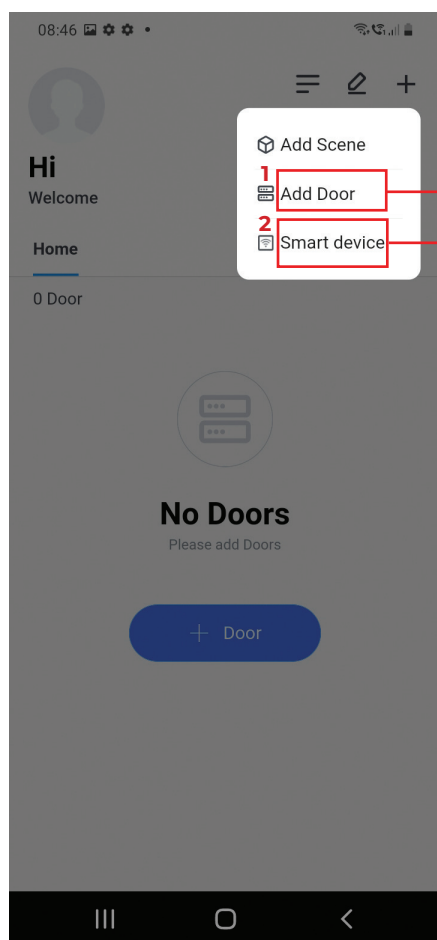
1. Mount the metal base of the camera with screws.



2. Then set up the camera.

## PROGRAMMING

Depending on its purpose, the camera can be programmed in two different ways:



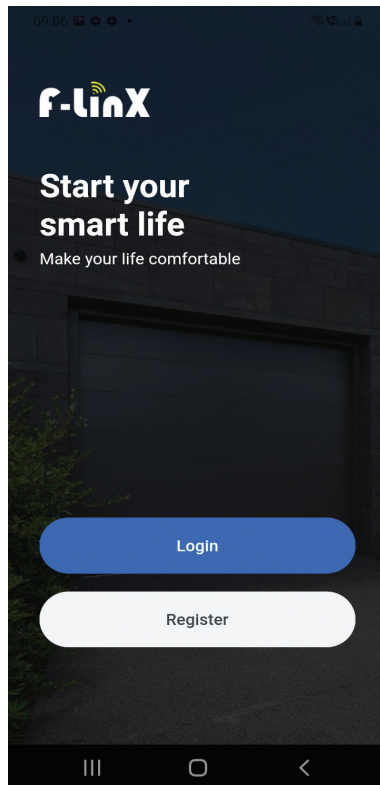
1. Camera connected with motor drive

2. Camera operating independently

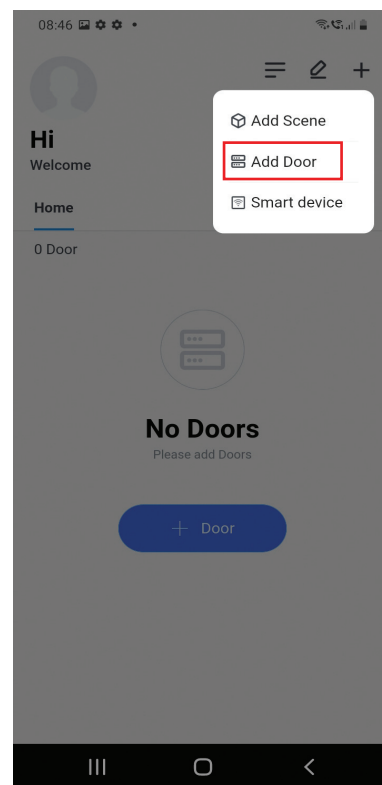
## CONNECTION BETWEEN CAMERA AND MOTOR DRIVE



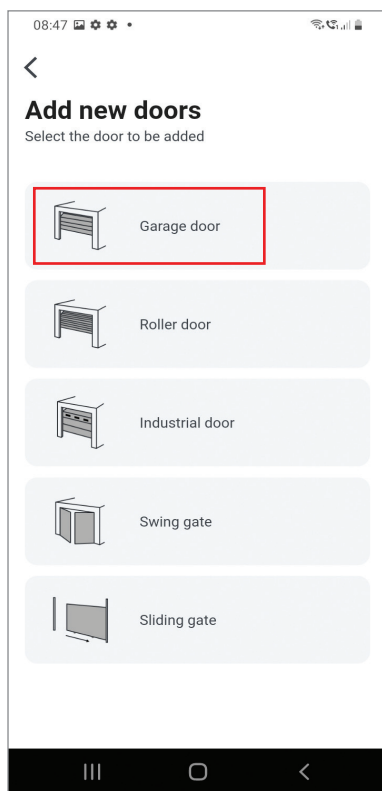
1. Scan the QR code included with the camera in the box.



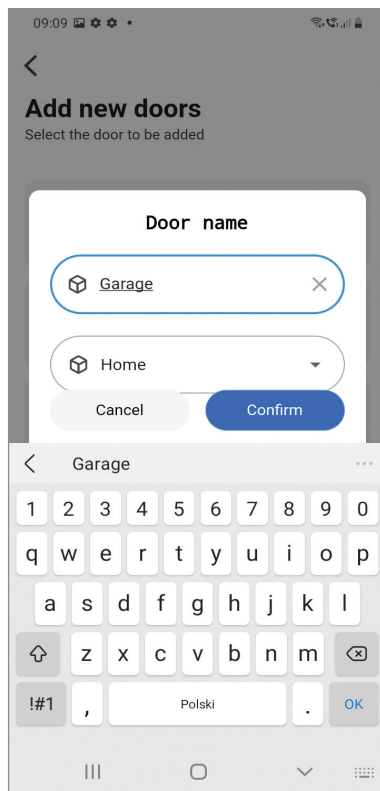
2. Register and log in.



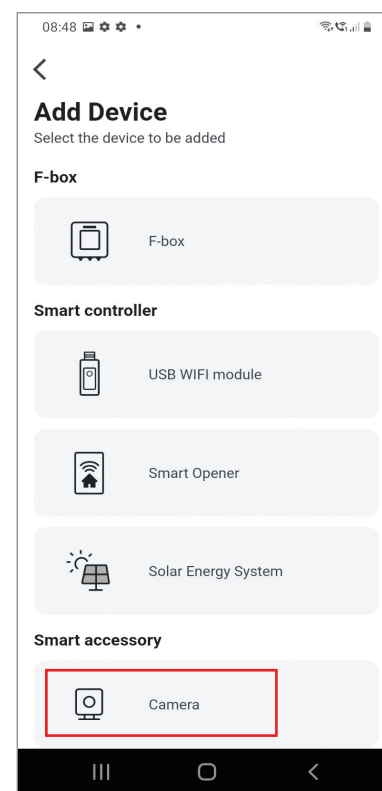
3. Select the 'Add door' function.



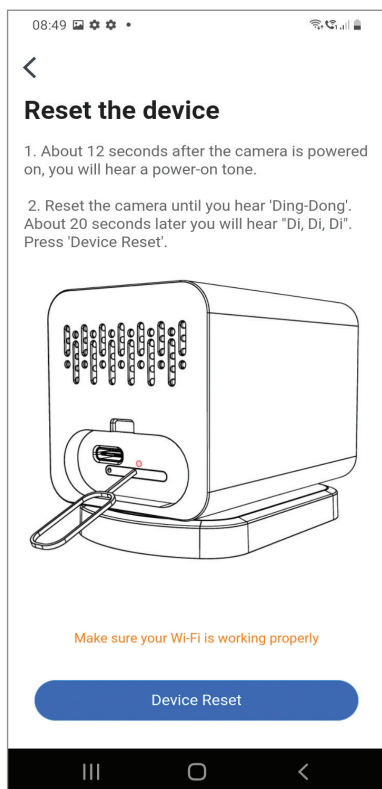
4. Select 'Garage door'.



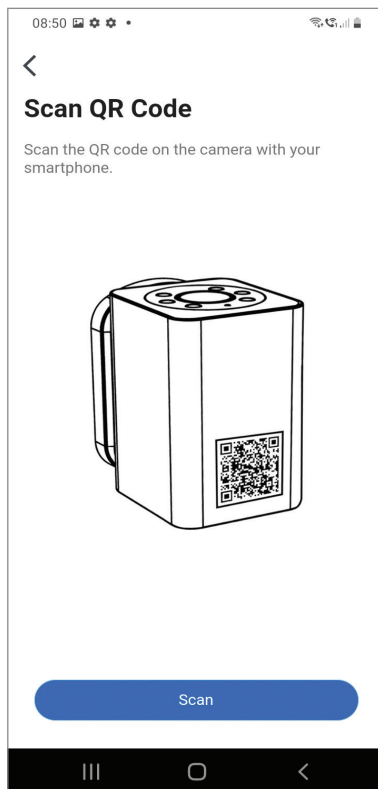
5. Enter the name of the door.



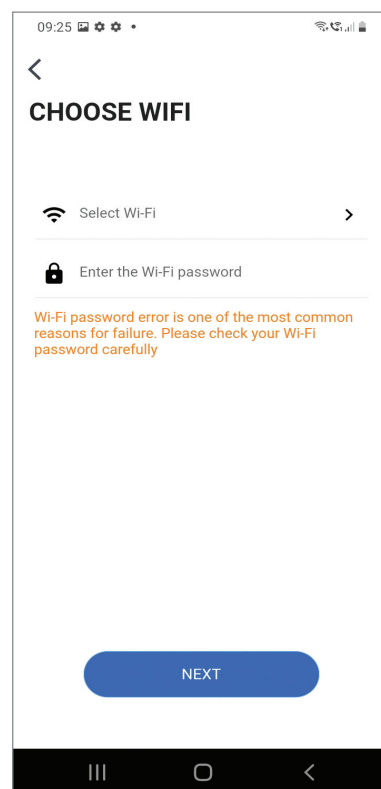
6. Select camera function.



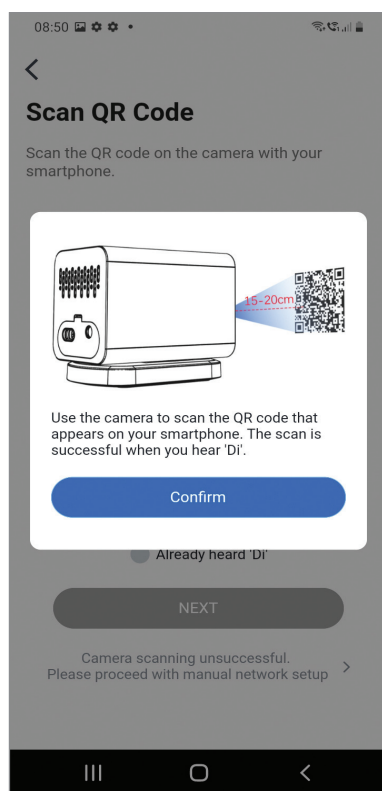
**7.** Switch on the camera. Approx. 12 seconds after switching the camera on, you will hear a switch-on sound. Use the needle to reset the camera (an acoustic signal will confirm it). After 20 seconds you will hear 3 short acoustic signals. Press 'Reset device' in the app.



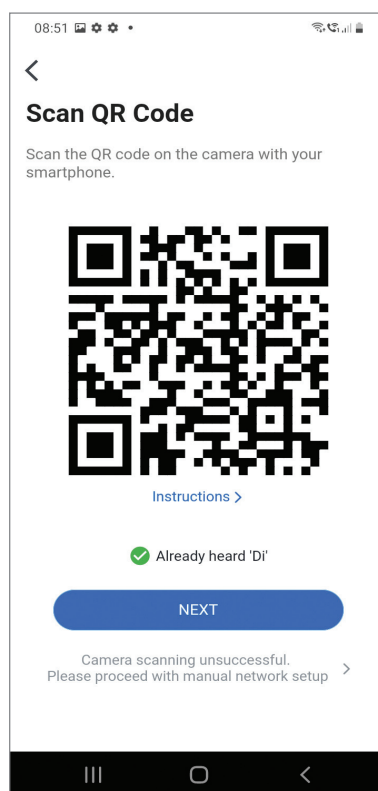
**8.** Use your phone to scan the QR code on the camera.



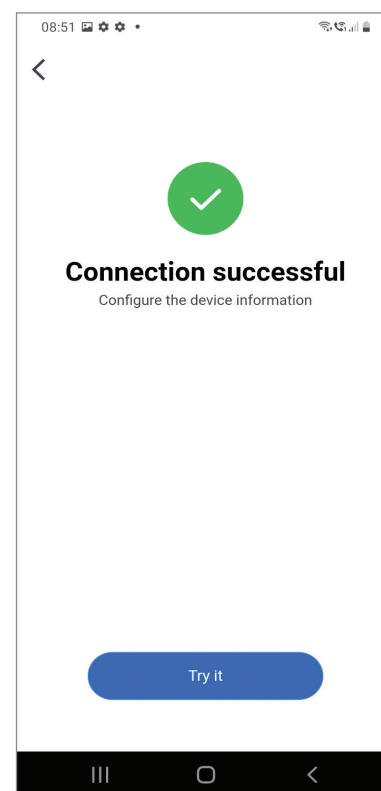
**9.** Select an available Wi-Fi network, enter the password and press 'Next'. A QR code will be displayed on your mobile phone.



**10.** Use the camera to scan the QR code from your phone. When you hear an acoustic signal it means that the scan was successful. The camera will automatically configure the network. Press 'Confirm'.

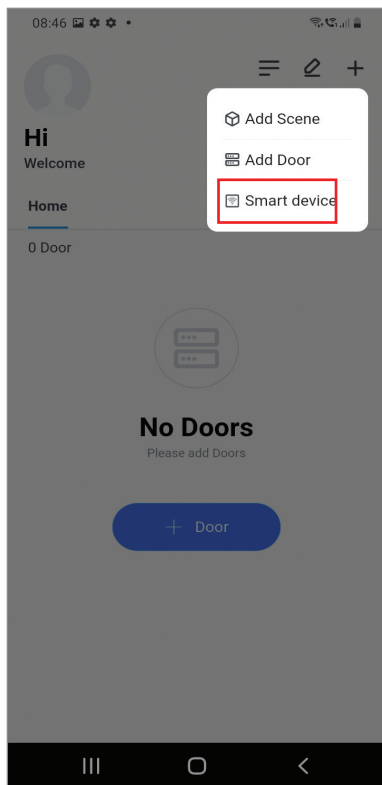


**11.** Check the 'I have already heard 'di'' checkbox and press 'Next'.

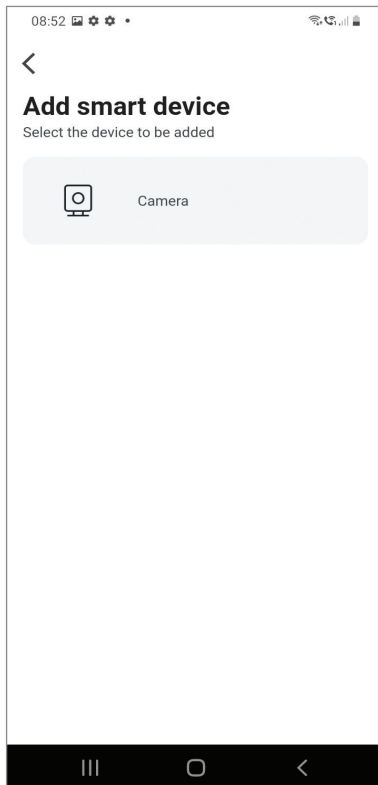


**12.** Connection successfully completed.

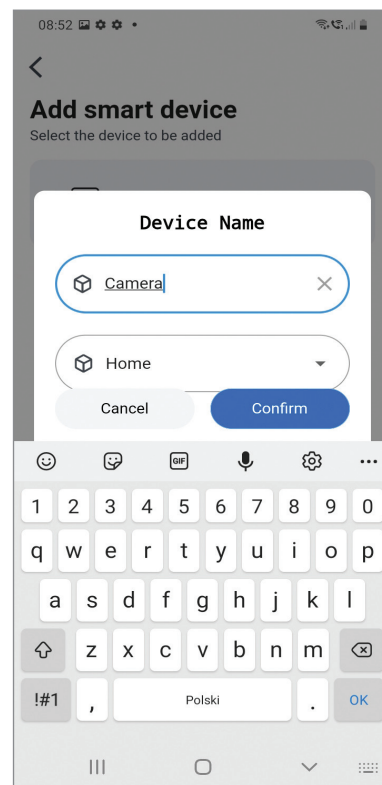
## INDEPENDENT FUNCTIONING OF THE CAMERA



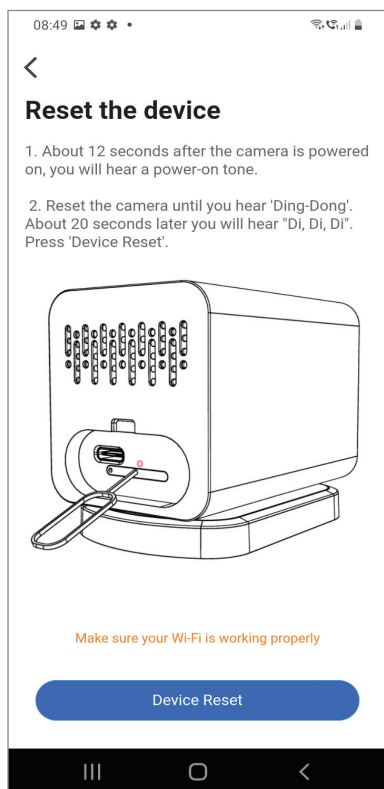
1. Select 'Smart device'.



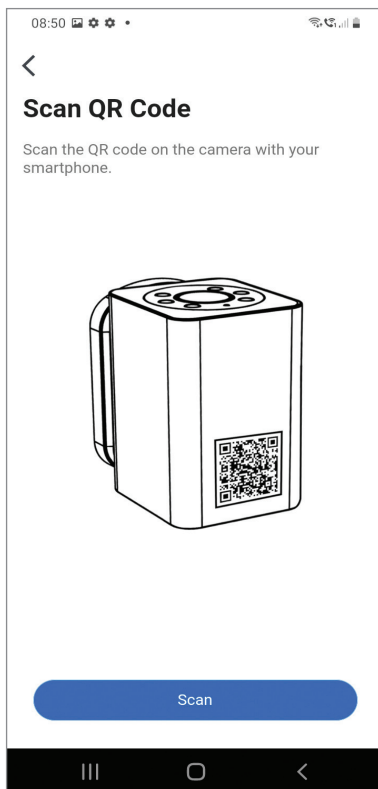
2. Select camera function.



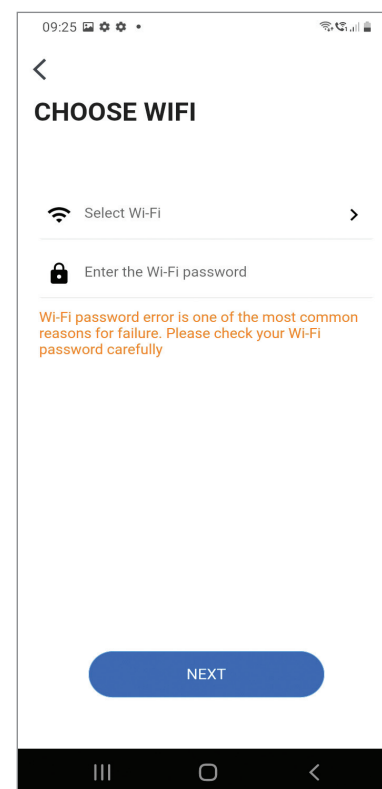
3. Enter the name of the camera.



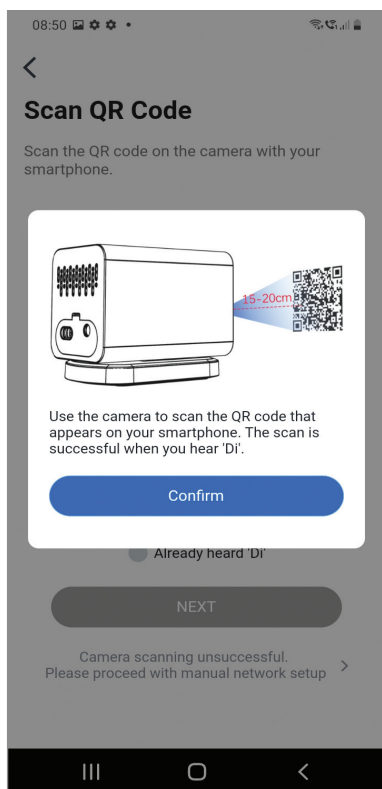
4. Switch on the camera. Approx. 12 seconds after switching the camera on, you will hear a switch-on sound. Use the needle to reset the camera (an acoustic signal will confirm it). After 20 seconds you will hear 3 short acoustic signals. Press 'Reset device' in the app.



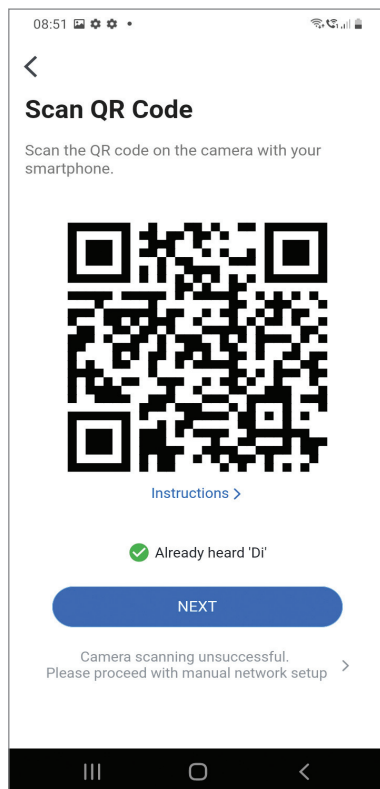
5. Use your phone to scan the QR code on the camera.



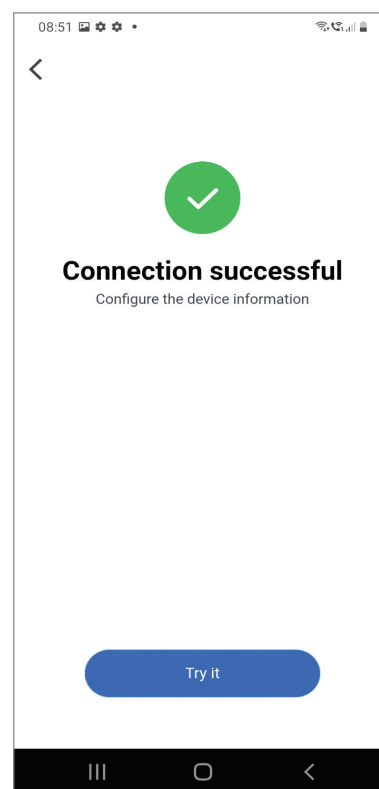
6. Select an available Wi-Fi network, enter the password and press 'Next'. A QR code will be displayed on your mobile phone.



**7.** Use the camera to scan the QR code from your phone. When you hear an acoustic signal it means that the scan was successful. The camera will automatically configure the network. Press 'Confirm'.



**8.** Check the I have already heard 'di' checkbox and press 'Next'.



**9.** Connection successfully completed.

**GROS**

GROS SP. Z O.O.  
UL. STAROWIEJSKA 39  
44-300 WODZISŁAW ŚLĄSKI